

Find, learn, pursue **what moves you**



INDIANA UNIVERSITY
SCHOOL OF PUBLIC HEALTH
Bloomington

Why choose public health?

Students are drawn to the field of public health for many reasons—it is an expansive field with countless opportunities. If you already know your career goals, we're here to help you reach them. If you're ready to explore all of the possibilities that a life in public health has to offer, we'll help you find a path to put your passion into action.

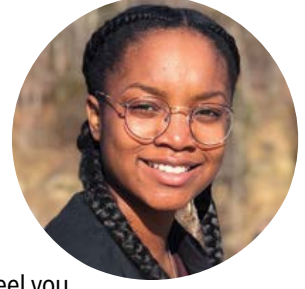
Shyam Raman | Valparaiso, IN



Shyam majored in **Epidemiology** with minors in Healthcare Management and Policy and Statistics. He hopes to work in academic or policy research at the intersection of health, public, and urban economics.

“The undergraduate program in Epidemiology was, for me, the perfect intersection of community-focused health and application of the statistical techniques.... My time in the School of Public Health-Bloomington has been one of constant support and encouragement from faculty within and outside of my major.”

Ashton Anekwe | Gary, IN



While studying **Safety** at the School of Public Health-Bloomington, Ashton completed an internship as a Risk Control Intern at Liberty Mutual. She hopes to work as a Safety or Risk Consultant.

“What I most appreciated about SPH is the one-on-one feel you get with not only the professors, but also your classmates. My major is pretty small, so I've had classes with mostly the same people over the course of my career and because of that know everyone's name and have a bond. It's super easy to ask questions and reach out regarding content I don't understand.”

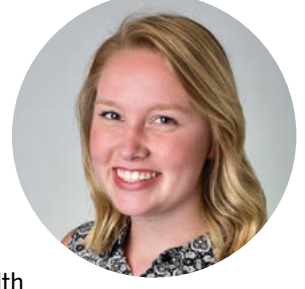
Drew Fox | Alpharetta, GA



Drew majored in **Tourism, Hospitality, and Event Management**, with a minor in Human Resource Management. He worked as a sales and marketing intern at the Four Seasons Hotels and Resorts Chicago Worldwide Sales Office. He hopes to pursue a career managing events and conferences.

“The resources available to students are outstanding.... The school has amazing connections that can help students land dream internships. I really liked the internship program associated with my major. Being required to complete our 320 field hours prior to our professional internship was a way to get experience on our resume and to test the waters of the industry. During my professional internship semester, it was my only focus, which allowed me to dedicate all my time to developing my skills in the field—something not offered at all universities.”

Sydney Halfeldt | Dyer, IN



Sydney majored in **Community Health** and plans to pursue a career in nursing.

“I chose IU's School of Public Health because I have such a passion for helping my community and promoting health. After touring the school and talking with advisors, I knew the School of Public Health was the place for me. Although it's one of the bigger schools on campus, it is such a tight-knit community that has similar interests and goals. The professors served as mentors to me and they really care about their students.”



DEDICATED TO IMPROVING LIVES WORLDWIDE

At the IU School of Public Health-Bloomington, we prepare students for challenging careers that promote wellness and the prevention of disease in communities everywhere.

Since our founding in 1946, we've witnessed the world's changing health needs—including the ways public health practice, physical activity, nutrition, the environment, and recreation enhance wellness. We support and challenge our students with a learning environment that's engaging, inspiring, and rewarding.

With our caring, expert faculty and staff and an educational experience that embraces real-world learning, the IU School of Public Health-Bloomington can help you find, grow, and follow your passion.

WE BELIEVE IN:

- Health and quality of life as a human right
- Diversity and the value of a global perspective
- A multidisciplinary approach to learning and research
- Helping others through community engagement
- The educational value of career and internship experiences

A QUALITY EDUCATION, INDEPENDENTLY VERIFIED

We are an accredited school of public health, a distinction granted by the Council on Education for Public Health (CEPH), an independent agency with rigorous criteria for quality and integrity.

2,500+
UNDERGRADUATE STUDENTS

97%
OF GRADUATES REPORTED FULL-TIME EMPLOYMENT, CONTINUING EDUCATION, MILITARY OR VOLUNTEER SERVICE BEYOND GRADUATION

14
UNDERGRADUATE MAJORS OFFERED

FINDING YOUR PLACE

in the public health sphere



1 Health and Life Sciences

In these fundamental fields of public health, you might address how environmental hazards affect human health or even help to prevent or slow the spread of the next pandemic. If you're a big-picture thinker with a general love of math and science and a knack for spotting patterns, those are the kinds of strengths many successful members of these career paths—which often require advanced degrees—possess. Maybe you'll be the one to discover new treatment options for a disease or develop innovative practices to make our workplaces, food, or air safer.

CAREER POSSIBILITIES: Professor • biostatistician • environmental health specialist • epidemiologist • pharmaceutical researcher • public health educator • food scientist

MAJORS TO EXPLORE: Environmental Health • Epidemiology • Nutrition Science • Exercise Science

2 Healthcare and Wellness

Medicine and allied health professions are among the fastest growing job sectors in the United States and a great fit for anyone who enjoys working directly with people to help them live the healthiest possible lives. If you think you'd like to help others make science-driven choices about exercise and nutrition, or rehabilitate from disease or injury, these careers are worth exploring—especially if you have a strong interest in anatomy, physiology, biology, chemistry, and physics. If you are interested in an advanced degree in medicine, athletic training, or physical therapy, you'll find a rigorous foundation for those pathways here.

CAREER POSSIBILITIES: Physical therapist • athletic trainer • registered dietitian • medical doctor • recreational therapist • physician assistant • optometrist • occupational therapist

MAJORS TO EXPLORE: Exercise Science • Dietetics • Recreational Therapy • Community Health • Nutrition Science • Fitness and Wellness

3 Community Health and Human Services

If you feel passionately about bettering the lives of children, families, and communities, these careers provide the opportunity for you to do that in a big way. Detail-oriented problem solvers with a human touch thrive in these fields—particularly individuals who enjoy assessing needs and figuring out which policy, programming, or education strategies might best address them. By focusing on effective communication, and understanding relationships and human development across the lifespan, you learn how to deliver services that can lead to a safer, healthier world.

CAREER POSSIBILITIES: Public health administrator • community health educator • wellness coordinator • social and community service manager • behavioral technician • safety specialist

MAJORS TO EXPLORE: Community Health • Environmental Health • Human Development and Family Studies • Youth Development • Safety

4 Sports, Events, Tourism, and Recreation

If you believe that sports and recreation activities are essential to a healthy life, there are so many ways to transform that passion into an exciting career. Sports, hospitality, tourism, and other recreational activities are booming industries that require people who have expertise in marketing, sales, management, media, operations, and legal matters. The communication, problem-solving, and teamwork skills you develop as you study in these areas will provide you with business acumen that can be applied to other industries.

CAREER POSSIBILITIES: Marketing associate • assistant coach • event planner • hospitality manager • recreation specialist • account executive

MAJORS TO EXPLORE: Sport Marketing and Management • Tourism, Hospitality, and Event Management • Parks, Recreation, and the Outdoors

“Public health” can be applied to everything from recreational therapy to promoting child wellness to the tracking of disease, not to mention the safety of our food, workplaces, and natural environments.

Whether you already know what you'd like to pursue professionally or haven't yet discovered the right fit, our four student **career communities** provide you with a place to connect and find support as you navigate your unique academic path and plan your future.



CAREER COACHING, EXPERIENCE, AND CONNECTIONS



Student Sade Roberson learned about hotel operations and the hospitality industry during her internship at the French Lick Resort's historic West Baden Springs Hotel.

Support for your career begins on your first day as a student and lasts well beyond graduation. From the moment you set foot on the path of public health with us, our Office of Career Services will help you make informed decisions. We offer workshops, career fairs, and personalized career coaching to current students and alumni.

Internship experience—it's academic

You'll learn a lot inside of classrooms and lecture halls at the School of Public Health, but you'll also put those lessons into practice. Internships are a vital part of all of our academic programs, and an opportunity for you to make important connections in your field. Our students completed more than 650 internships last year.



Sport Marketing and Management students get on-the-job experience—both on campus and with professional teams across the nation.

A well-connected, supportive alumni community

Our accomplished graduates have a habit of giving back—often by looking to recruit from our talented pool of current students. Alumni regularly return to campus to participate in networking events and career panels.

Preparation for professional programs

The **Health Professions and Prelaw Center (HPPLC)** is a campuswide resource for undergraduate students who plan to apply to professional programs in law, medicine, and other health professions. Pairing HPPLC's preprofessional advising with in-house services from the School of Public Health can help you become a more competitive candidate for medical school and other healthcare-related programs.

Considering a preprofessional academic track? Check out HPPLC's step-by-step guidebook at go.iu.edu/hpplc.

STAY CURIOUS, GET INVOLVED

ALUMNI EXPERIENCES THAT LED TO
SUCCESSFUL CAREERS

Brooke Hudson, RDN Sports Performance Dietitian at Indiana University

Internships:
Performance Nutrition Assistant at IU Athletics
Systems Support Intern at IU Dining
B.S. in Dietetics



Leading the Student Academy of Nutrition and Dietetics at IU (SAND-IU) and interning with IU Dining enabled Brooke to make meaningful connections and gain valuable leadership skills that have continued to impact her career to this day. "Being involved on campus gave me a sense of community within my field and helped me build valuable connections with faculty and other members of the campus community. My dietetics program director has been a huge support from my college years to now and someone I can lean on."

Johnny Jones Corporate Ticket Sales Manager at Pacers Sports and Entertainment

Internships:
Partnership Activation Intern at Indianapolis Indians
Ticket Sales Intern at Indianapolis Colts
Football Recruiting Assistant at IU Football
B.S. in Sport Marketing and Management



"While working on a class project during my freshman year, I connected with an executive at the Indianapolis Indians. Later, that valuable connection led to a ticket sales internship with the Colts. My hands-on undergraduate experiences ultimately helped me achieve a full-time role working with the Pacers."

31,000+
LIVING ALUMNI IN

34%
OF OUR
UNDERGRADUATES
GO ON TO PURSUE
A GRADUATE
PROGRAM

Use your undergraduate degree to build a firm foundation for graduate programs such as our MS in Athletic Training or a Master of Public Health.

50
STATES AND
43
COUNTRIES

Our town

Scan any article that lists the best college towns in America, and you'll find Bloomington is a perennial favorite. We have the best of everything here—a safe, friendly community, a casual pace, and world-class entertainment, sports, parks, and dining.

#2 Best College Town in America, USA Today

You'll find delicious Thai, Tibetan, and Turkish dining options within walking distance of campus, as well as lively community events, galleries, intimate music halls, and theaters. If lush, outdoor spaces are what you crave, campus has beautiful, forested paths, and there are several scenic parks and lakes nearby.

visitbloomington.com



STUDENTS HAIL FROM
39 AND **16**
STATES COUNTRIES



LIFE IN BLOOMINGTON

**A picture-perfect campus,
a small town with big-city culture**

Our campus

THRIVE LIVING-LEARNING CENTER

This specialized housing community offers first-year students of all majors a place to thrive and develop lifelong wellness habits together. THRIVE LLC is a place where residents work on service projects and explore possible majors and careers together. Most of all, it's a place where you'll find support and encouragement for a healthy body and mind as well as your own personal, academic, and professional development.

go.iu.edu/sph_llc

DIVERSITY AND INCLUSION

The next generation of health professionals is full of people who look like you, as well as many who are different from you—a life in public health means you will be working with people of all different backgrounds. We celebrate and seek diversity in all its forms because we know there is so much we can learn from each other. Everything about our academic mission is made better by the exchange of ideas and diverse experiences of our students, faculty, and staff.

go.iu.edu/diversityatsph

HONORS PROGRAM

The SPH Honors Program provides exceptional students with a passion for learning, the opportunity to enhance their college experience, engage in service beyond the classroom, and participate in scholarly research. Students who successfully complete the program receive recognition for a dedication to the field of public health.

go.iu.edu/sphb-honors

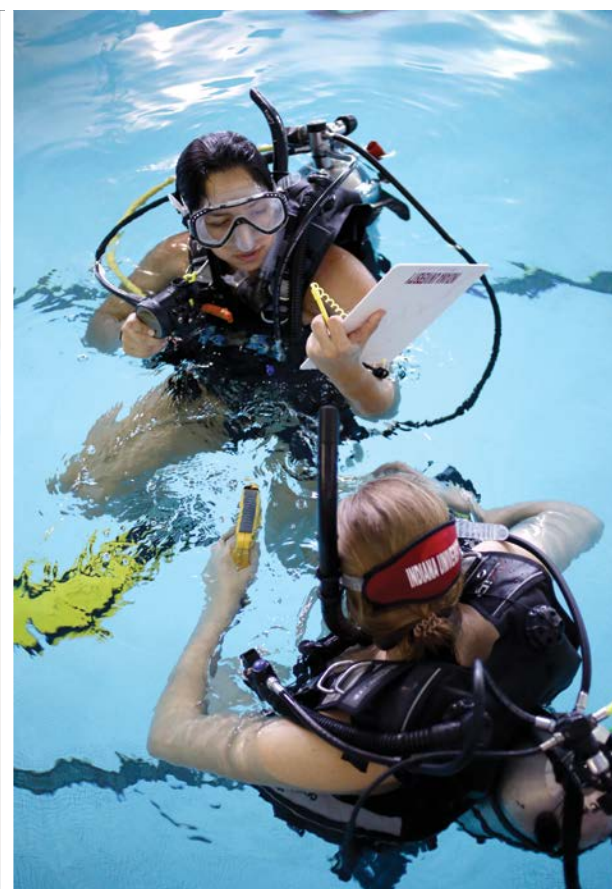
STUDENT ORGANIZATIONS

There are dozens of SPH-related student associations, clubs, advocacy groups, and academic honor societies that offer valuable opportunities to strengthen your leadership and teamwork skills. They'll also help you make the most of your education and enrich your academic, social, and future professional life.

go.iu.edu/sphb-experience



ACADEMIC LIFE



DEGREES OFFERED

Bachelor of Science in Public Health

MAJORS IN

- Community Health
- Environmental Health
- Epidemiology
- Fitness and Wellness

Bachelor of Science in Applied Health Science

MAJORS IN

- Dietetics
- Human Development and Family Studies
- Nutrition Science
- Safety
- Youth Development

Bachelor of Science in Kinesiology

MAJORS IN

- Exercise Science
- Sport Marketing and Management

Bachelor of Science in Recreation

MAJORS IN

- Parks, Recreation, and the Outdoors
- Recreational Therapy
- Tourism, Hospitality, and Event Management

Academic advising: an individualized approach

You'll have one-on-one help from an academic advisor throughout your time as a student. Advisors are there to help you navigate campus life, your program requirements, and preparation for your specific career path.

Classroom experience

Our classes come in all sizes and spaces—from large lecture halls to laboratories where small group collaboration is key. We're passionate about new, world-changing ideas. You'll be encouraged to speak up, ask questions, and present to your peers.

75% OF SPH UNDERGRADUATE CLASSES HAVE FEWER THAN 40 STUDENTS

MINORS

- Coaching
- Environmental Health
- Epidemiology
- Event Planning
- Exercise Science
- Fitness Instruction
- Global Health Promotion
- Health, Identity, and Social Justice
- Health Studies
- Healthy Aging
- Hospitality Services
- Human Development and Family Studies
- Human Sexuality
- Kinesiology
- Maternal and Child Health
- Nutrition
- Obesity and Health
- Outdoor Recreation, Parks, and Human Ecology
- Parks and Recreation Administration
- Personal Well-Being
- Public Health
- Recreational Sport Management
- Safety
- Sport Marketing and Management
- Tourism, Hospitality, and Event Management
- Youth Development





FACULTY WHO MAKE A DIFFERENCE

in the classroom and the world

Our faculty provide a supportive and stimulating learning environment and actively engage you in their world-changing research. With more than 150 experts across five academic departments, you'll be mentored in our classrooms, laboratories, and out in the community.

Fieldwork requirements

Hands-on opportunities are an important part of all academic programs in the School of Public Health. You'll be able to earn academic credit outside of the classroom through internships, community service projects, service-learning courses, or work with other institutions on projects led by our faculty.



PHOTO BY KAY ISAAC

Brian Forist, Ph.D.
Lecturer and Program Coordinator
Department of Health & Wellness Design

I bring unique perspectives and experiences to students, often working outdoors. We examine the ways time outside enhances health and wellness and design experiences for visitors to parks and other outdoor recreation venues. Our program in Parks, Recreation, and the Outdoors is not often bound by traditional classrooms. We might be found in nearby parks, protected areas, or museums learning together about healthy ecosystems, healthy people, and healthy experiences."



Patricia Silveyra, Ph.D.
Chair and Professor
Department of Environmental and Occupational Health

Some challenges to our health today include chemicals/pathogens present in water, air, and food sources, infectious agents transmitted by vectors, and global problems caused by environmental change. Our students participate in high-impact opportunities to better understand the effect of environmental exposures on human health. Students in my lab and department are researching topics such as the effects of vaping on the respiratory system, the impact of chemicals in food and water, and how infectious agents are transmitted through different sources.

Research with faculty, present your work

Research that improves lives and helps communities is central to the work of the School of Public Health. You'll have opportunities to work closely with your professors on projects that make a difference.

Lenna Gottschild
Undergraduate student
B.S.P.H. in Community Health



Every spring, students who have conducted research in partnership with faculty are invited to formally present their work on Public Health Research Day. "Student research has provided me with the opportunity to apply what I have learned in my classes," says Lenna, who won the event's Undergraduate Award for her presentation "Trauma Training for Teachers." Through this experience, Lenna surveyed teachers to learn how student trauma manifests in the classroom and identified topics teachers would find most helpful in future training.

Alumni advice

Danielle Sinclair
Project Manager, Institutional Healthcare at Guidepoint Global



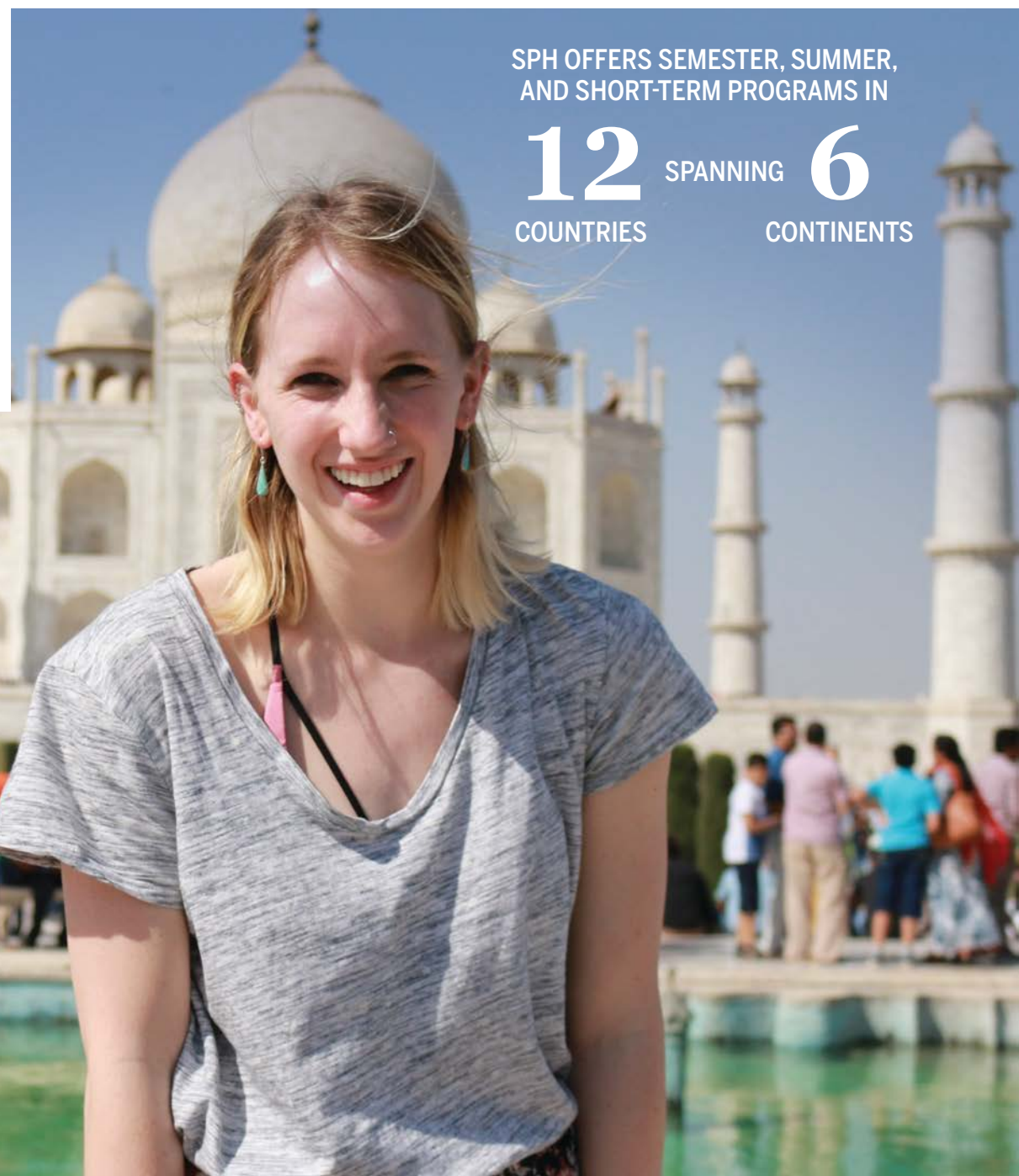
Internships:
IU Health Intern at the Cardiopulmonary Rehabilitation Program based at the YMCA Student Health Coach at Ready to Move IU

B.S.P.H. in Fitness and Wellness
Danielle says the real-world, person-to-person experiences with individuals of all ages and backgrounds, such as her internship working as a student health coach, were incredibly valuable during her time on campus and after graduation. She would encourage new students to connect with classmates, other students, alumni, and faculty. "Ask them questions about the industry, discuss your career goals, and stay connected after you graduate," she says.

Get a global perspective

Our faculty's involvement in international research collaborations and exchanges creates opportunities for students in nearly 50 countries. You might engage in service projects on a faculty-led study tour or participate in an outreach program to gain firsthand insight into public health issues around the world.

go.iu.edu/studyabroad



SPH OFFERS SEMESTER, SUMMER, AND SHORT-TERM PROGRAMS IN
12 COUNTRIES SPANNING **6** CONTINENTS



BEGIN YOUR JOURNEY

Let us show you what we have to offer

The best way to find out whether the School of Public Health is the place for you is to visit. Sign up for an information session about our program or make an appointment with a member of our student recruitment team to talk about your questions. Plan your visit at go.iu.edu/visitsph.

The IU Office of Admissions also offers campus visit options and a virtual tour: go.iu.edu/visit.

Investing in your future

Earning a degree from the IU School of Public Health takes a big investment of time, brainpower, and money. We do all we can to help you manage costs and keep your return on investment high.

Many scholarships, awards, and grants are available to IU students, and some are reserved strictly for those enrolled in the School of Public Health-Bloomington. Learn more about the support we provide to our students at go.iu.edu/sphsupport.

Learn about even more IU scholarships at scholarships.indiana.edu.



Ready to apply?

First, you'll apply for admission to Indiana University Bloomington at indiana.edu/admissions. Choose any of our School of Public Health majors.

All incoming undergraduate students enter our school in one of two ways—beginning in University Division and certifying into our school, or being directly admitted based on high school performance.

UNIVERSITY DIVISION

Most IU freshman and transfer students begin their studies in University Division, our academic home to new students, while they complete the certification requirements for their intended major.

DIRECT ADMISSION

Incoming freshmen with strong high school performance can be offered direct admission to our School of Public Health. That means you can enter IU already admitted into your major-specific program.

For more information about the SPH admission process, timeline, and requirements, visit go.iu.edu/applytosph.

CONNECT WITH US

For more information about studying here, connect with us!
We look forward to meeting you and becoming part of your social network.



sphadmit@iu.edu



[instagram.com/iusphb](https://www.instagram.com/iusphb)



bit.ly/iusphb



twitter.com/iusphb

1025 E. Seventh Street
Bloomington, IN 47405
812-855-2032
sphadmit@iu.edu
publichealth.indiana.edu



INDIANA UNIVERSITY
SCHOOL OF PUBLIC HEALTH
Bloomington